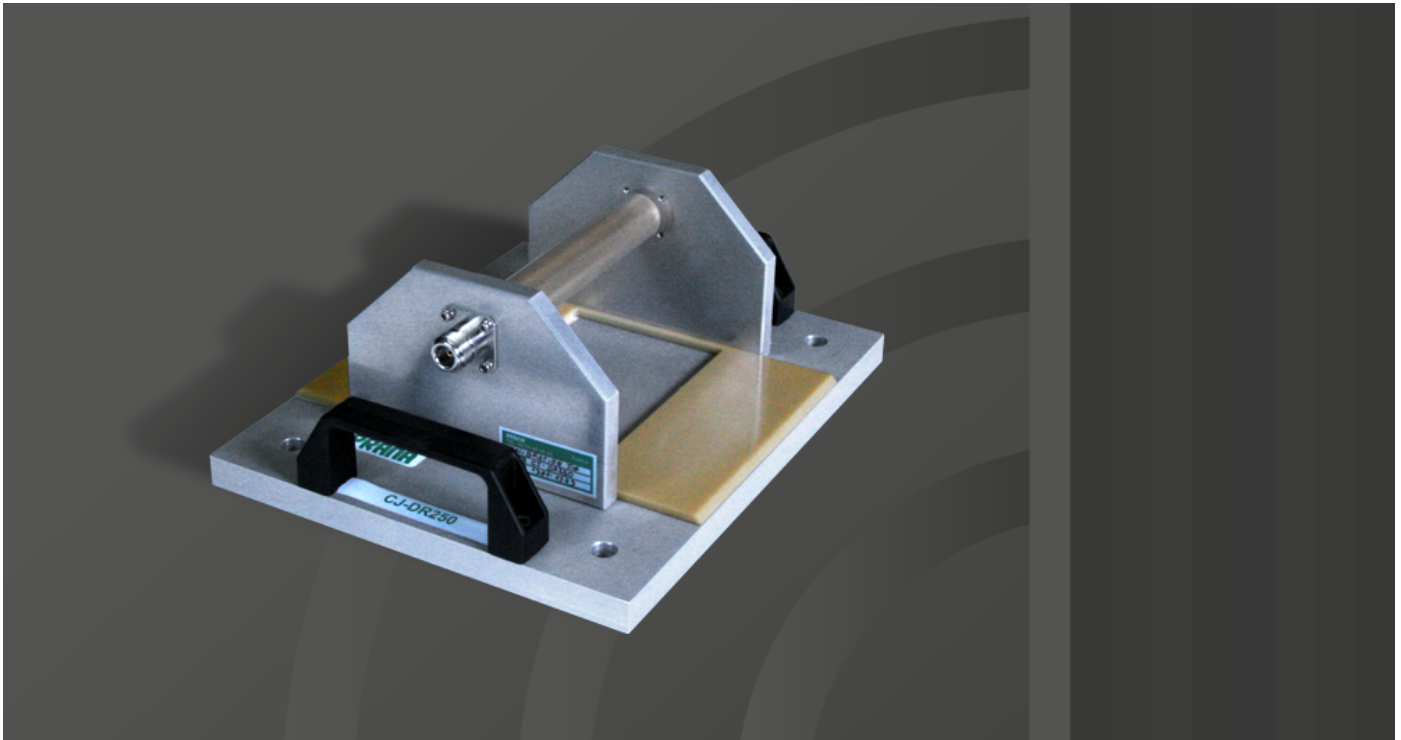


CJ-DR250

Accessories: 4 kHz - 400MHz / 500 W CW



Prana CJ-DR250

- Calibration JIG for IP-DR250
- N connectors

Accessories

- CJ-DR250 => 500 W CW
- IP-DR250 => 500 W CW

Maintenance

- Rapid diagnostic
- Minimal downtime
- Contract for preventive and corrective maintenance available

Applications

- Could be used for EMC standards :
 - DO 160 D
 - Mil STD 461
 - Automotive standards: PSA, Renault, Ford, Daimler Chrysler...
 - ISO 11452-4
 - SAE J1113-4
 - ...

CJ-DR250

Accessories: 4 kHz - 400MHz / 500 W CW



Specifications

Frequency Range	0.01 - 400 MHz
Window diameter	43.8 mm
RF input connector	Type "N" Female
Maximum input Power	500 W

CJ-DR25002DEC2024 - Electrical and Mechanical Specifications subject to change without notice.

PRANA RF - 6 Rue Pierre Milon 19100 Brive-la-Gaillarde - France
Tel : (+33) 555 86 49 40



www.prana-rf.com
Made in France